



INQUIRY JOURNEYS

California
Scope and Sequence



Navigating School

How can we make school a great place for everyone?

Students need to understand the places and people around them to thrive at school. In this Inquiry, students explore their roles at school, investigating how they can make choices that will make school a great place for themselves and those around them.

Investigation Modules



School norms, behaviors, and interactions

Creating maps of the school and classroom



Student roles and responsibilities

Being a helper



Interviewing staff members about roles and duties

Leaders, helpers, and friends



Tactics to help resolve conflicts

Encountering problems

Action Module



Using the lessons and resources in the Action Module for a Written Project, students might collaborate on an original storybook to help future students navigate school.



My Team and Self

How can we unite to build a powerful class community?

To understand what you can accomplish as a team, you need to understand who makes up the team and how those individuals can work together. Students explore elements of personal identity and identify opportunities for teamwork in their class community.

Investigation Modules



Self-portraits: historical and student-generated

Family, culture, and identity



Case Study: Apollo 11 and the power of different skills

Classmate interviews



Brainpower and brain growth

Strengths, challenges, and growth mindset



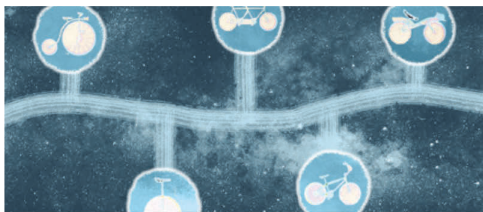
Cooperation and teamwork

Setting shared goals

Action Module



Using the lessons and resources in the Action Module for a 3D Project, students might create works of art to teach visitors about how knowing themselves and their classmates helps them form stronger teams.



Past, Present, and Future

How can we use wisdom from the past to build a better future?

Understanding our past experiences and how our memories shape us is integral to planning for our future. Students explore concepts of time and memory, discovering and sharing stories and memories that have helped them learn and grow.

Investigation Modules



Past, present, and future

Learning from stories



Increments and measures (months, weeks, days)

Natural cycles and patterns (night and day, seasons)



Chronological order

Timelines



Learning from experiences

Relationship between actions and outcomes

Action Module



Using the lessons and resources in the Action Module for a 2D Project, students might create a display of illustrations that shares pieces of wisdom they've gained from past experiences.



Families Near and Far

How can we bring families together to form stronger communities?

Families take many forms; there's no single definition. In this Inquiry, students identify the roles and responsibilities that contribute to a family. They explore what makes their family unique and the differences they may encounter among different families and cultures.

Investigation Modules



Exploration of different family structures

Families around the world



Responsibilities, needs, and wants of a family

Compare and contrast roles



Exploring holidays and food traditions

Customs and traditions



How families help each other

Diverse family types

Action Module



Using the lessons and resources in the Action Module for a Written Project, students might collect recipes to create an original cookbook that celebrates the diversity of traditions in their classroom community.



Our Special Location

How can we help others appreciate our special location?

Our geographic location shapes who we are and how we live. During this Inquiry, students investigate how location and climate shape daily life, and how goods and services meet community needs.

Investigation Modules



Maps and globes: symbols, directions, and location

Mapping important community locations



Characteristics of rural, urban, and suburban communities

Community goods and services



Landforms, bodies of water, and local and regional climates

Effects of climate and landscape on way of life



Symbols that represent our community

Community workers and helpers

Action Module



Using the lessons and resources in the Action Module for a Multimedia Project, students might use cardboard boxes to create a 3D map of their community with symbols and signage, inviting other students to their class for a miniature guided tour.



Civic Engagement

How can we work together for the good of the community?

You are never too young to engage in civic life. In this Inquiry, students explore different forms of participation and investigate key civics topics such as rights, fairness, responsibilities, rules, and laws.

Investigation Modules



Responsibilities as community citizens

Function of rules and laws



Historical changes in rules and laws

Case Study: Women and girls in sports



Difference between fact and opinion

Making informed choices



Working together to overcome challenges

Case Study: Americans with Disabilities Act

Action Module



Using the lessons and resources in the Action Module for a Presentation Project, students might collaborate to plan a video PSA that investigates an issue in their school community they would like to address.



Meeting Needs and Wants

How can we work together to meet community needs and wants?

Communities are created to meet our common needs. In this Inquiry, students are introduced to the concepts of needs and wants, scarcity and abundance, the ways that producers and consumers interact, and how individuals and communities make choices about how to use their resources.

Investigation Modules



Understanding needs and wants

Prices, saving, spending, and giving



Planned vs. unexpected expenses

Financial literacy and decision-making



Producers and consumers

Market economy: supply and demand



Community needs and wants

Generating ideas to meet community needs

Action Module



Using the lessons and resources in the Action Module for a Multimedia Project, students might demonstrate their understanding of community needs and wants by designing original products for “sale” at a model marketplace or makers fair.



Our Changing Landscape

How can we respond to our changing landscape?

Our relationship to the physical world around us begins with our own geographical location and the physical features of that location. In this Inquiry, students explore access to and dependency on natural resources, how and why we modify the landscape, and the impacts that modifications can have on land, water, and living things.

Investigation Modules



Identifying geographic features

Natural resources of community and state



Types of modifications to the environment

Population growth and landscape changes



Basic human needs

Freshwater and issues of scarcity



Responses to environmental problems

Innovation in fresh food production

Action Module



Using the lessons and resources in the Action Module for a 3D Project, students might design an interactive game to teach other students how everyday objects can be traced back to natural resources.



Innovation

How can we innovate to improve the world around us?

Innovation touches every facet of life – past, present, and future. In this Inquiry, students consider how innovation changes society as a whole as they make their own blueprints for inventing a better world.

Investigation Modules



Sparks and impacts of innovation

Using evidence to evaluate impact of innovation



Impact of Industrial Revolution's innovations

Transcontinental Railroad



Spotlight on George Washington Carver

Characteristics of effective innovators



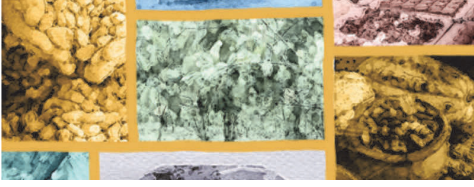
Improving communities through innovation

Modern innovations

Action Module



Using the lessons and resources in the Action Module for a Presentation Project, students might organize a living history museum to inform their community of the innovations and innovators that have brought about significant changes to daily life.



Global Connections

How can we act as global citizens?

Is it possible to touch a country and its people without ever setting foot there? In this Inquiry, students explore the geographic ways they are connected to distant places and the people who live there through the movement of people, goods, and ideas.

Investigation Modules



Relative location and geographic features

Latitude, longitude, and grid systems



Domestic and global trade



Geography's effect on culture

Natural resources and raw materials



Cultural diffusion and globalization

Action Module



Using the lessons and resources in the Action Module for a 2D Project, students might inform their peers of the origins of various products by creating a wordless storybook that traces the journeys of these products.



Migration and Movement

How can we honor and respect our many cultures?

Throughout the history of the United States, immigration has played a large part in shaping our culture, politics, and economy. In this Inquiry, students explore the timeless themes of immigration as they uncover the meaning and value of cultural identity.

Investigation Modules



Identifying push and pull factors

The impact of conflict on movement



Cultural identity and immigration

Evolving identities



Waves of immigration to the US

Identifying themes of immigration experiences



Diverse communities

Community connections

Action Module



Using the lessons and resources in the Action Module for a Multimedia Project, students might host an exhibition night focusing on the stories of local landmarks named after immigrants.



The 20th Century Civil Rights Movement

How can we take steps toward equality and justice?

All people in the United States have the right to equal protection under the law. Students investigate how citizens exercise their rights in our democracy through the lens of the Civil Rights Movement.

Investigation Modules



Rights and responsibilities

Civil Rights Act of 1964



March on Washington



The Civil Rights Movement

Learning from changemakers



Positive footsteps for change

Action Module



Using the lessons and resources in the Action Module for a Written Product students might celebrate the contributions of civil rights changemakers by creating a graphic novel that highlights their efforts and impacts.



The Diverse Geography of California

How can we be stewards of our state?

Students investigate how Californians – past and present – have used and managed the state's land and resources. They explore California's geography, Indigenous practices, and modern agriculture to learn how they can sustain the land for future generations.

Investigation Modules



California's defining physical and human geographic features



Relationship between California's agricultural power and the evolution of its water system



Ways of life and resource use of earliest Indigenous Californians



Case studies of resource stewardship

Action Module



Using the lessons and resources in the Action Module, students might create brochures about an initiative to protect a natural resource in their community.



From Territory to Golden State

How can we help tell the story of California?

Students explore California's journey from colonization to statehood. They uncover diverse historical perspectives from events like the missions period, Mexican rule, the Gold Rush, and the path to statehood to help them tell the story of their state.

Investigation Modules



Daily life and cultural experiences of the Spanish missions in California



Impacts and consequences of the California Gold Rush



Social and political change during Mexican rule of California



California's path to statehood and new governance structure

Action Module



Using the lessons and resources in the Action Module, students might honor a person or event from California's history by creating and presenting a scale model of a new community monument.



Our Changing State

How can we help meet our state's changing needs?

Students examine California's modern history – its shifts in economy, its evolving industries, and the changing needs of its people. They explore how Californians responded to challenges in the past in order to consider how we might meet the needs of the future.

Investigation Modules



Impacts of the Transcontinental Railroad



California industries and urbanization



Economic challenges of the Great Depression and Dust Bowl era



California's education system

Action Module



Using the lessons and resources in the Action Module, students might organize a workshop for residents to share ideas on improving community services by creating materials, guiding discussions, and presenting their findings.



Native America

How can we better honor the cultural heritage of this land?

Ever since their first encounter with Europeans, Native Americans have been misrepresented in the popular imagination and the historical record. Students explore diverse historical sources to form a deeper understanding of Native America's rich and varied cultures and histories.

Investigation Modules



Diversity across Native America

Cultural areas investigation



Storytelling as a historical source

Folktale investigation



Artifacts as historical sources

Analyzing artifacts



Perceptions of the "first Thanksgiving"

Comparing narratives

Action Module



Using the lessons and resources in the Action Module for a 2D Project, students might share the true stories of inspiring Native Americans by creating a series of honorary portraits for display in the school building.



The Colonial Era

How can facing the complexities of America's past help us to meet the challenges of the present?

The European settlement of North America created a collision of worlds that led to profound global impacts. In this Inquiry, students go beyond a single narrative to explore the complex web of events and cross-cultural interactions that helped shape both the past and present of our nation.

Investigation Modules



Columbian Exchange

Migration to the Americas



Colonial geography, economics, and culture

Slavery in the colonies



Jamestown colony source analysis

Plymouth colony source analysis



Social roles in Colonial America

Colonial resistance

Action Module



Using the lessons and resources in the Action Module for a Presentation Project, students might address the representation of cultural groups in colonial era artworks through a presentation to the school community.



The American Revolution

How can we promote life, liberty, and the pursuit of happiness for all?

The American Revolution reshaped society, culture, and government in the American colonies and territories. In this Inquiry, students explore the events, causes, and consequences of the Revolution, uncovering how diverse groups and individuals shaped the course of US history.

Investigation Modules



Pre-war timeline of important events

Development of colonial identity



Source analysis of Capitol paintings

Founding fathers case studies



British and American strengths and weaknesses

Major battles and the homefront



Declaration of Independence

Constitution, conflict, and compromise

Action Module



Using the lessons and resources in the Action Module for a Written Project, students might create a magazine to inform their community about contemporary events that align to (or don't live up to) the ideals of the Declaration of Independence.



Rights and Responsibilities

How can we contribute to a healthy democracy?

The concept of freedom can be applied to the relationships between individuals, governments, religious groups, tribes, or other organizations. This Inquiry explores the concept of freedom in parallel with a study of the Constitution, Bill of Rights, and branches of government.

Investigation Modules



Preamble to the Constitution

Absolute monarchy and power



Constitution, Bill of Rights

Amending the Constitution



Checks and balances, branches of government

Constitution in crisis



Creating arguments through images

Protections and limitations on freedom

Action Module



Using the lessons and resources in the Action Module for a 2D Project, students might design and create a mural that illustrates their rights and responsibilities as Americans to encourage young people to be more active in their community.